



nevadaworks

Bringing Nevada Job Seekers and Employers Together

Governor's Workforce Development Board
Thursday, April 16th, 2026

1



Nevadaworks' Mission

**Provide the best
workforce
solutions fulfilling
needs of employers
and career seekers.**



2

Our Two Primary Customers

Career Seekers


- Access to training
- Career Guidance
- Supportive Services

Employers

- Support recruitment & retention strategies
- Access to training and upskilling
- Link to the workforce system




3



Serving Northern & Central Nevada

- Carson City
- Churchill
- Douglas
- Elko
- Eureka
- Humboldt
- Lander
- Lyon
- Mineral
- Pershing
- Storey
- Washoe
- White Pine



With a service area spanning over 70,000 square miles, Nevadaworks supports one of the largest local workforce regions in the country. Our work reaches communities ranging from major urban hubs to sparsely populated rural towns. We provide access to workforce services across a region that over 700,000 Nevadans call home.

4

Employer Engagement: Aligning Industry & Workforce in Northern Nevada

01

Northern Nevada is experiencing one of the most accelerated economic expansion periods in our modern history

02

Aligning talent pipelines with employer demand begins with meaningful, ongoing industry engagement

03

Nevadaworks is driving coordinated regional efforts to strengthen and expand employer engagement and system connectivity



5

A LOT OF WORK IS ALREADY HAPPENING



Northern Nevada's economy continues to diversify, creating new demand for coordinated employer engagement



Numerous agencies and partners are actively engaging employers across sectors, often with overlapping goals



The challenge isn't the lack of engagement, it's coordinating it, aligning it, and making access easy for employers

6

The Engagement Challenge in Talent Pipeline Management

- Employers often have shifting priorities and limited bandwidth
- Engagement tends to spike only when a need arises (hiring surges, expansions, training gaps, etc.)
- This reactive participation makes long-term workforce planning difficult
- A more structured, predictable model is needed to maintain consistent industry feedback and insights

7

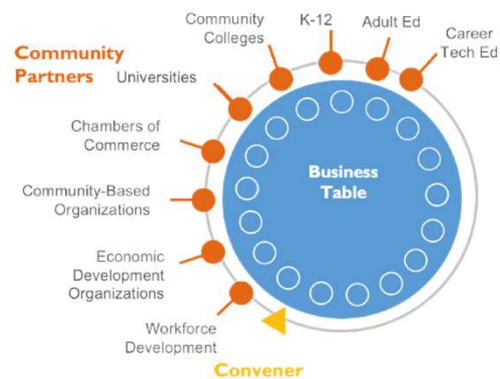


ISPs utilize a nationally recognized model to convene industry and the workforce system

Alignment of employer needs with training, workforce initiatives, and wrap-around services

Nevadaworks has launched ISPs based on regional labor market data, employer input, and future growth forecasts

ISPs create a single point of entry for employers to access Nevada's workforce system



8



Building a strong system through partnerships and collaboration

Nevadaworks is aligning key partners to strengthen the system, eliminate duplication and create a seamless employer experience. Examples of these partnerships include:

DETR

Collaborates & provides funding to strengthen the statewide workforce infrastructure

EmployNV Business Services

Strong collaboration supporting industry engagement efforts

Nevadaworks

Backbone organization driving system alignment in Northern Nevada

EDAWN

Connector for employers into the workforce ecosystem

Nevada Tech Hub

Forward thinking partnership supporting outreach strategy in emerging tech fields

Education and Training Providers

Working together to align education to meet employer needs

- ✓ **Less duplication** for employers
- ✓ **Stronger pipelines** for talent development
- ✓ **Greater efficiency** in delivery of services
- ✓ **Better outcomes** for businesses, workers, and the region

9





nevada**works**

Building Momentum Together: Strong Industry Sector Partnerships Across Northern Nevada

- ❖ Advanced Manufacturing
- ❖ Logistics and Transportation
- ❖ Healthcare
- ❖ Digital Technology
- ❖ Lithium Battery Lifecycle (2025)
- ❖ Construction & Infrastructure (coming in 2026)

10



Change is Coming: Evolving the Next Gen Industry Sector Partnership Model

Nevadaworks has updated our approach to our Industry Sector Partnership initiative to stay aligned with rapidly changing industry needs, while respecting employer time and ensuring feedback leads to coordinated, measurable action.

Why are we evolving?


- Industry conditions and talent needs are changing faster than traditional engagement models account for
- Employers want meaningful input without excessive meetings or administrative burden
- Employer feedback is most valuable when it leads to actionable follow through
- Stronger coordination across workforce partners improves speed and effectiveness

11

Nevadaworks 2026 Industry Engagement Calendar

Nevadaworks will host three distinct meeting formats in 2026

- **Industry Sector Partnership (ISP):**
 - **Frequency:** Semi-annual (in-person)
 - **Participants:** Employers, workforce system stakeholders
 - **Objective:** Bring together employers for each priority sector to identify workforce challenges, skills gaps, and emerging priorities. These in-person events will support data-driven decision-making to scale contextualized solutions and interventions by providing a structured environment for intentional discussions and collaboration. Guest speakers, employer panels, and sector experts may be invited to share insights on trends, best practices, and regional workforce needs.
- **Industry Pulse Meeting (IPM):**
 - **Frequency:** Bi-monthly (virtual)
 - **Participants:** Employers, economic development entities, and industry associations
 - **Objective:** Offering employers a virtual platform to stay aligned on regional workforce activity between ISP convenings. These sessions focus on timely updates, including hiring trends, programmatic updates, project timelines, investigation into emerging sub-sectors, and special research topics. While streamlined, these meetings ensure continuous touch points, enabling Nevadaworks and employers to quickly surface needs and maintain momentum on workforce initiatives.
- **Core Partnership Retrospective (CPR):**
 - **Frequency:** One week following each ISP and IPM convening (virtual)
 - **Participants:** Workforce system stakeholders, including education and training providers, Community Based Organizations, government agencies, economic development partners
 - **Objective:** Serves as a structured debrief session for workforce stakeholders following each employer-facing meeting. CPR meetings focus on reviewing key themes, concerns, recommendations, and opportunities identified by employers during the ISP and IPM convenings. Partners collaborate to develop coordinated action plans, assign responsibilities, and establish timelines to address employer needs and sector priorities



12

Industry Pulse & Core Partner Retrospectives

Strategic Update on Workforce Engagement Models

13

Focused Engagement → Quicker Response

Industry Pulse Meeting (IPM)		
Employer Voice First	Near-Term, Tactical Focus	Data Gathering, Not Solutioning
Core Partner Retrospective (CPR)		
System Accountability	Alignment & Coordination	Action Oriented

- Recently convened second round of Industry Pulse Meetings on 3/26-3/27
- Gathered real-time hiring and industry insights
- Conducted second round of Core Partner Retrospectives on 4/1
- Assigned coordinated actions and leads to system partners
- Reinforced a structured, responsive engagement model that moves quickly and efficiently for our employers

14

Industry Partners

- Lithium Americas
- Aqua Metals
- Carson Valley Health
- Ioneer
- WCSD
- Chesapeake Spice Company
- Panasonic
- Renown
- Henry Schein
- Patagonia
- ProLogistix
- Tesla
- American Dental Association (Nevada)
- And many more!!

Workforce Stakeholders

- DETR
- NSHE
- EDAWN
- GOED
- Washoe County School District
- Lyon County School District
- Recovery Friendly Workplace
- Nevada Tech Hub
- JAG
- TMCC
- WNC
- GBC
- And many more!!

15

How the GWDB Can Strengthen Employer Engagement

If I can ask this board for one thing today it would be to support efforts that cultivate champions and assist in removing barriers to participation for our employers

- Promote a consistent statewide message about the value of employer engagement, Industry Sector Partnership meetings, and available workforce resources to reduce confusion and create a clear point of entry.
- Serve as industry ambassadors by using board members' networks and credibility to encourage peer employers to participate and champion the workforce system
- Elevate employer success stories to state and regional levels to demonstrate impact, build trust, and motivate additional employers to engage
- Support strategic workforce priorities to ensure ISP efforts align with high-demand sectors and statewide economic development goals, reinforcing employer confidence in system alignment

16

Building a Strong, Unified Workforce System

Nevada's workforce system is strongest when its partners are aligned. By creating synergy across the system, we reduce duplication, streamline access, and offer employers a clear, coordinated path to the resources they need. This integration strengthens our talent pipelines and the resilience of our communities. We have the system. We have the partners. Together, we can build the workforce Nevada needs



17



THANK YOU

18